

SPECIFICATIONS

Rated(额定参数): 300V,8A
 Dielectric strength(抗电强度): AC1500V/1 Minute
 Insulation Resistance(绝缘电阻):1000MΩ Min
 Contact Resistance(接触电阻):20mΩ Max
 Temp. range(操作温度): -40℃~+105℃
 MAX Soldering(瞬时温度):+250℃,5s

Housing Material(塑件): PA66 (UL94 V-0)
 Contact(端子): Brass, Tin plating(黄铜镀锡)

PITCH RANGE		NOMINAL DIMENSION RANGE	
IN MM	OVER	IN MM	OVER
TO 6	TO 10	TO 30	TO 60
TO 10	TO 24	TO 60	TO 100
±0.10	±0.15	±0.25	±0.30
		±0.30	±0.50
		±0.50	±0.70
			±1.00

Ordering Information

JL15EDGRC-XXX XX G X 1

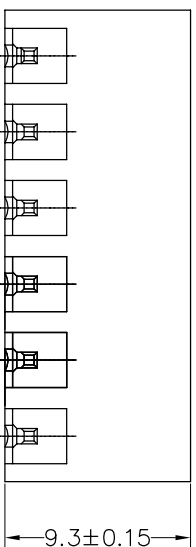
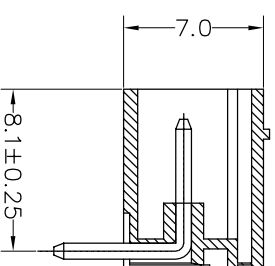
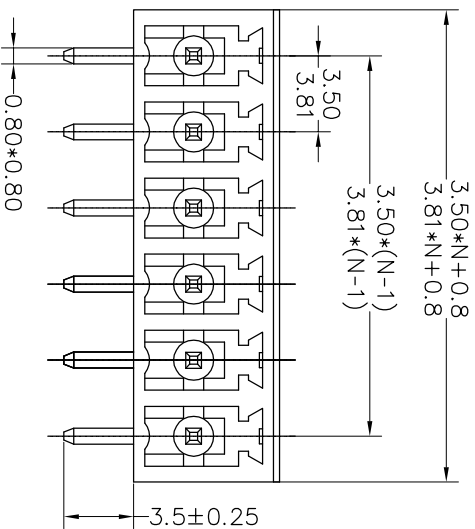
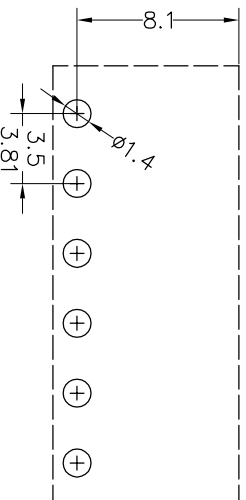
Pitch
 350=3.5PH
 381=3.81PH

No.of pins
 2P~24P

Housing Color
 B=Black
 G=Green
 U=Blue
 R=Red
 W=White
 Y=Yellow
 O=Orange
 E=Grey

Packing
 0=Pe bog
 T=Tube
 A=Troy

Recommended P.C.B Layout(Top Side)



REV	DATE	MODIFICATION DESCRIPTION	CHANGE	DIM	TOL	APPROVE	SCALE	FIT	PART NO.	TITLE:
A	2019.11.21	NEW DRAWING		Angle	±3°		UNIT	mm	JL15EDGRC-XXXXXXG1	3.50/3.81mm Pitch Male Pluggable Terminal Blocks
1							SIZE	A4		
OPERATION			DRAW	yiyusheng 19.11.21		SCALE	FIT			
CHECK						UNIT	mm			
DRAW						SIZE	A4			
SHEET						SHEET	1/1			
PROJ.						PROJ.				

JILIN 深圳市锦凌电子有限公司
 SHENZHEN JINLING ELECTRONIC CO.,LTD
 Tel: 86-755-2997-5806/5802 Fax: 86-755-2997-5992