

## SPECIFICATIONS

Rated(额定参数): 300V,8A  
 Dielectric strength(抗电强度): AC1500V/1 Minute  
 Insulation Resistance(绝缘电阻):1000MΩ Min  
 Contact Resistance(接触电阻):20mΩ Max  
 Temp. range(操作温度): -40℃~+105℃  
 MAX Soldering(瞬时温度):+250°C,5s

Housing Material(塑件): PA66 (UL94 V-0)  
 Nut(螺母): Brass (黄铜)  
 Contact(端子): Brass, Tin plating(黄铜镀锡)

PITCH RANGE		NOMINAL DIMENSION RANGE	
IN MM	OVER	IN MM	OVER
TO 6	10	TO 30	60
TO 10	24	TO 60	100
±0.10	±0.15	±0.25	±0.30
		±0.30	±0.50
		±0.50	±0.70
			±1.00

## Ordering Information

JL15EDGRM - XXX XX G X 1

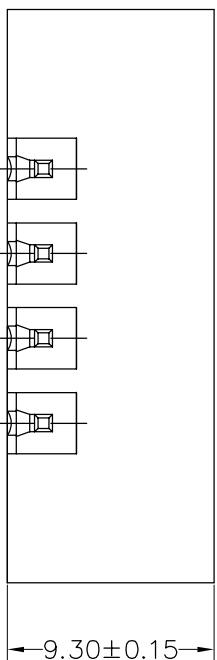
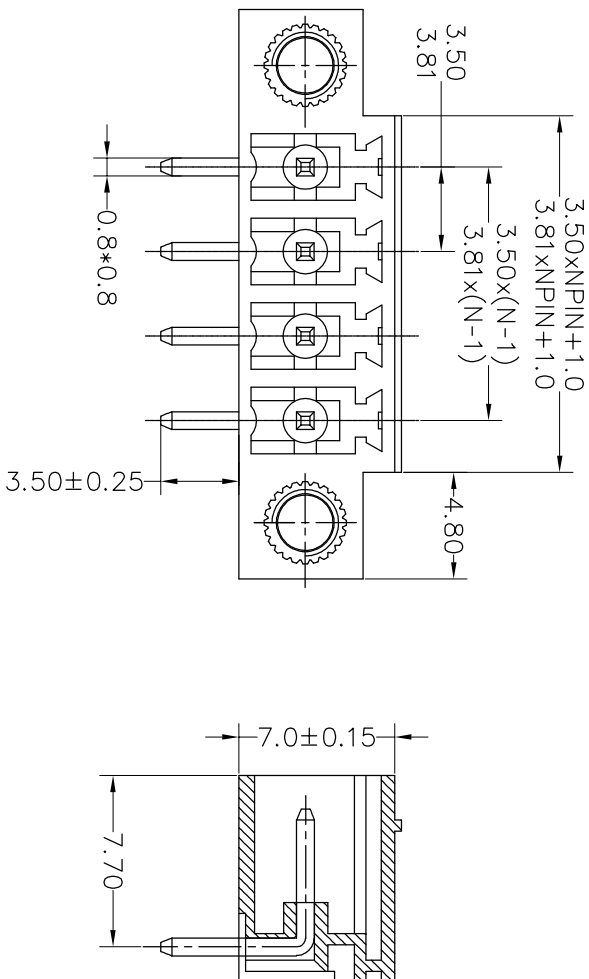
Pitch  
 350=3.5PH  
 381=3.81PH

No. of pins  
 2P~24P

Housing Color  
 B=Black  
 G=Green  
 U=Blue  
 R=Red  
 W=White  
 Y=Yellow  
 O=Orange  
 E=Grey

Packing  
 O=Pe bog  
 T=Tube  
 A=Troy

Recommended P.C.B Layout(Top Side)



OPERATION		DRAW		SCALE		FIT		PART NO.	
XX	±0.30	yjyusheng	19.11.21	UNIT	mm	A4	1/1	JL15EDGRM-XXXXXXGX1	
X:XX	±0.20	CHECK		SIZE		SHEET	1/1	3.50/3.81mm Pitch Male Pluggable Terminal Blocks	
X:XXX	±0.10	APPROVE		PROU.					
Angle	±3°								
DIM	TOL								

**JILIN** 深圳市锦凌电子有限公司  
 SHENZHEN JINLING ELECTRONIC CO.,LTD  
 Tel: 86-755-2997-5806/5802 Fax: 86-755-2997-5992

REV	DATE	MODIFICATION DESCRIPTION	CHANGE
A0	2019.11.21	NEW DRAWING	
1			